

AMS **PowerProbe™ 9570-VTR**



AMS, Inc.
105 Harrison Street
American Falls, Idaho 83211

phone: 800-635-7330
fax: 208-226-7280
email: ams@ams-samplers.com
web: www.ams-powerprobes.com

AMS PowerProbe™ 9570-VTR

The 9570-VTR PowerProbe™ combines hi-powered direct push and augering capabilities with operator-friendly engineering. Powered by a 60 HP (Tier 4) John Deere liquid-cooled diesel engine, it includes an SB-21 201 ft-lb hydraulic hammer with an adjustable 2200 BPM.

9570-VTR Features

- Adjustable mast for angled probing and drilling
- 60 hp (Tier 4) John Deere liquid-cooled diesel engine accessible via engine access hood
- Spring-loaded pull yoke
- Hydraulic outriggers and multi-purpose dozer blade
- 201 ft-lb hydraulic hammer
- 80" standard probe stroke
- 4,000 ft-lbs auger torque
- New automatic drop hammer
- Regen system
- More water-tight and ergonomic control panel with more controls and a pivot-put-away option
- Wireless remote with pendant backup
- Wireless remote storage compartment
- Emergency stop system
- 12 volt accessory outlet
- Hour meter
- Tooling vise
- Lockable tooling box with multiple compartments
- Electro-hydraulic valves with manual backups
- Hydraulic oil pressure and temperature gauges
- Increased hydraulic capability (3,000 psi at 32 gpm)
- 40 gallon hydraulic oil storage
- 30 gallon diesel tank
- Everything-over-the-same-hole design
- Improved auger guide attachment.
- New rod centering attachment.
- More user-friendly and failsafe 3,000 lb. hydraulic hi-speed winch
- New Hydraulic-actuated upright rod rack makes rod handling quicker and less tasking
- Durable powder-coated finish, and power track

Geotechnical Options

- Mast Mounted Auto Drop Hammer (SPT)
- CPT, CPTu, Seismic and MemoVane
- Single Point Anchoring System (CPT)
- Dual Point Anchoring System (CPT)

Warranty

- Full one year factory warranty

New 3,000 lb. Hydraulic Hi-speed Winch

New Auto-Drop Hammer with Improved Hammering Capability & Functionality

Run Every Function from a Single Control Panel

New 4,000 lb Auger and Hi-Speed SB-21 Hammer Setup with Hydraulic Pivot and Locking Systems

Stronger Mast with a Larger Foot for Increased Stability

More Compact Transport Height (80" with winch) and Width (65" overall)

Fully Equipped Weight Under 12,000 lbs, and Lower Center of Gravity

Control Panel Storage & Manual Hydraulic Control Center

NEW, quieter, more fuel-efficient (Tier 4) 60 HP John Deere Engine

Increased fuel storage (30 gallons)

The Hammer, Auger Motor, Winch, and Auto-drop Hammer can all be positioned over the same borehole without any realignment or repositioning of the rig.

A more ergonomic, water-tight control panel with pivot-put-away option allows the user to run all functions from one location. It includes engine controls, auto-drop hammer and speed controls, and a new digital display that shows the user instant engine operating levels.



**NEW quieter, more fuel-efficient
60 HP (Tier 4) John Deere,
Liquid-Cooled Diesel Engine.**



**Hydraulic tooling rack has increased rod
capacity makes handling your tooling
quicker and easier for the operator.**



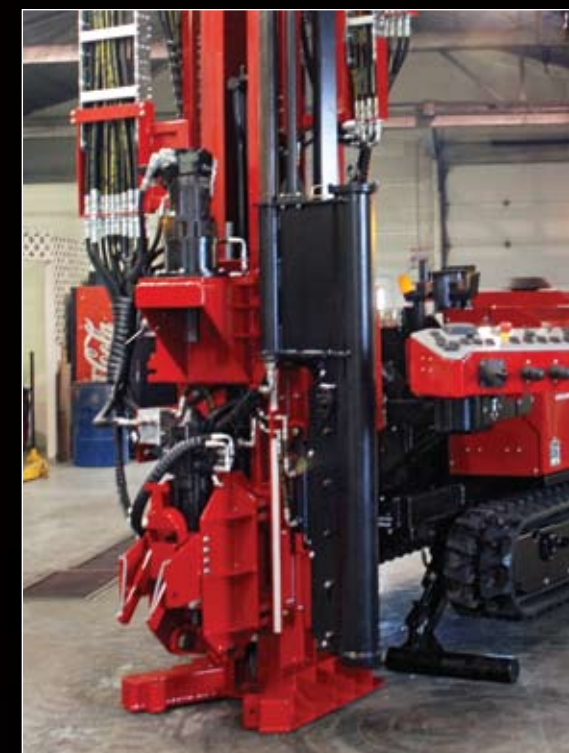
**Multi-purpose dozer blade also functions
as an outrigger and accessory carrier.**



**Lockable and secure control panel
storage above manual hydraulic
control center.**



**Remote Pendant with improved controls
provides the ability to operate dozers,
outriggers, track speed, and start/stop.**



AMS 9570-VTR PowerProbe



Extended Winch Height 202" & Mast Height 198"



Dimensions shown are for standard model.

AMS Customer Service

We're Here to Help!

At AMS, our knowledgeable and friendly staff is here to assist you with detailed product information, special orders, delivery scheduling, and more. If you need assistance determining which tool to use, how to use it, or if you need equipment customized to fit your specific needs, contact our knowledgeable customer service and sales staff.

Making you successful is our job!



Ryan Anderson
Western US & Canada
PowerProbe Sales
800-635-7330 ext. 143
Cell: 208-406-9341
ryana@ams-samplers.com



Ken Lipscomb
Southeastern US & International
PowerProbe Sales
800-635-7330 ext. 160
Cell: 706-680-9015
kenl@ams-samplers.com



Tech Specs

9570-VTR

Horsepower (liquid cooled)	60 hp
Engine rpm Setting	2,400 rpm
Power Source	Tier 4 John Deere Diesel Engine
Track Speed	0 to 2.8 mph
DIMENSIONS	
Weight	Under 12,000 lb
Overall Length	175"
Overall Width	64"
Overall Height (folded)	98"
Individual Track Width	13"
Mast Extended Height	198"
Extended Winch Height	202"
Probe Stroke	80"
HYDRAULICS	
Hydraulic Oil Pressure	3,000 psi
Hydraulic Flow Rate	32 gpm
Hydraulic Oil Cooler	90,000 BTU (Single)
Hydraulic Oil Capacity	40 gal
Fuel Tank Capacity	30 gal
HYDRAULIC OPERATION	
Down Force	41,000 lb
Pull-Up Force:	55,000 lb
In/Out Travel	10"
Horizontal Traverse	10"
Foot Vertical Stroke	20"
Probe Angles	30° to 102°
Hydraulic Hammer (S-21)	201 ft-lb 2,200 bpm
Auger Drive Head	4,000 ft-lb 55- Low rpm 150-Hi rpm



The world's finest sampling equipment.
phone: 1-800-635-7330 1-208-226-2017

More Information: www.ams-powerprobes.com
fax: 1-208-226-7280 email: ams@ams-samplers.com