

AMS 9700-VTR PowerProbe

AMS PowerProbe™ 9700 Series

The track-mounted 9700-VTR is powered by a liquid-cooled, 100 hp diesel engine, and includes a 550 ft-lb hydraulic hammer. It comes standard with a 5,000 ft-lb., 2-speed auger drive head for hollowstem augering, and an 80 inch probe stroke that accommodates 4- or 5-foot direct push tooling. The 9700-VTR also has 24 ton pulling capacity.

The rig has a durable, heavy-duty undercarriage with a wide-base platform and 18 inch tracks – allowing it to carry more weight, increase torque, and reduce ground pressure. Call now to get a customized quote for your next rig.

Standard Features

- 100 HP John Deere Diesel Engine with Block Heater (120v plug-in)
- 80" Mast Stroke with 34,000 lb Downforce and 48,000 lb Pullback
- 550 ft-lb S-22 hydraulic hammer with 1800 BPM
- 5,000 ft-lb hydraulic 2-speed auger motor
- Hydraulic System with 3000 PSI at 36 GPM
- Adjustable mast for angled probing & drilling
- Durable powder-coated finish, rubberized deck coating, and anodized metal power track
- Enhanced control panel
- Auxiliary hydraulic quick-connect ports
- Electro-hydraulic valves
- Spring loaded pull yoke assembly
- Built-in tooling storage
- Four hydraulic outriggers with removable pads
- Adjustable Tooling Chain Vise
- Wireless remote with pendant cord backup and storage compartment for the VTR's track drives
- Emergency Stop - Shut Off - System
- Electro-Hydraulic Valves w/ OEM Joystick & Detent Controls
- Hydraulic oil pressure and temperature gauges
- Emergency stop - shut off - system
- 12 volt accessory outlet
- Hour meter
- Tooling vise

Convenience Package

- Hand auger to pre-clear soil boring locations

Options and Accessories

- 500 ft-lb hydraulic hammer
- 3,000 lb. Hydraulic Hi-Speed Winch
- Quick Pull System
- Receiver Mount Auger Rack
- Customized Wash/Sample Prep/Decon Station
- Customized Equipment Storage & Tooling Boxes

Geotechnical Options

- Mast Mounted Auto Drop Hammer (SPT)
- CPT, CPTu, Seismic and MemoVane
- Single & Dual Point Anchoring Systems (CPT)

Warranty

- One year warranty

Truck and trailer-mounted 9500 Series PowerProbes™ are also available.



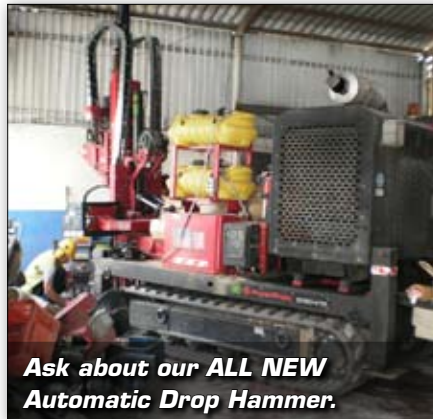
Financing Available

Basic Models Starting at \$2,706/mo (OAC)

AMS PowerProbe Customization

Every rig is custom-built to fit your specific needs!

For those who need even more out of their rig, our new and improved automatic drop hammer can be added to the 9700-VTR for geotechnical investigations. AMS can also mount custom tooling boxes and equipment storage, a receiver-mount auger rack, a customized wash/sample prep/decon station, and more. A variety of additional upgrade options and accessories are available so you can configure the unit to match your specific needs.



Ask about our ALL NEW Automatic Drop Hammer.



9700-VTR Control Panel (Includes Wireless Remote)



Custom-built with water tanks and sample preparation station.



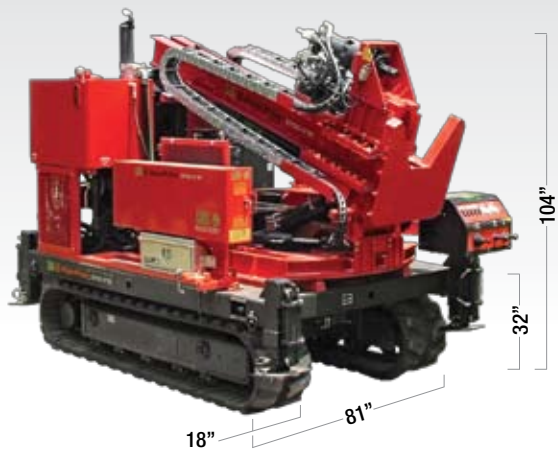
Ask about our Hi-Speed Winch and Auger Head Upgrades!



The world's finest sampling equipment.
phone: 1-800-635-7330 1-208-226-2017

More Information: www.ams-samplers.com/PowerProbes
fax: 1-208-226-7280 email: ams@ams-samplers.com

AMS 9700-VTR PowerProbe



Dimensions shown are for standard model.

*optional accessories

Tech Specs	9700-VTR	9700-D
Horsepower	100 hp (liquid cooled)	
Engine rpm Setting	2,200 rpm	2,200 rpm
Power Source	Diesel Engine	Diesel Engine
Track High Speed	3.7 mph	-
Track Low Speed	2.5 mph	-
DIMENSIONS		
Weight	13,400 lb.	7,550 lb.
Overall Length	149"	137"
Overall Width	81"	74"
Overall Height (folded)	104"	66"
Deck Height	32"	-
Individual Track Width	18"	-
Mast Extended Height	178"	178"
Probe Stroke	80"	80"
HYDRAULICS		
Double Pump	small pump - 2,400 psi - 12 gpm	
Hydraulic Oil Pressure	large pump - 3,000 psi	
Hydraulic Flow Rate	36 gpm	36 gpm
Hydraulic Oil Cooler	31,000 BTU (Double)	
Hydraulic Oil Capacity	80 gal	80 gal
Fuel Tank Capacity	30 gal	30 gal
HYDRAULIC OPERATION		
Down Force	33,000 lb	33,000 lb
Pull-Up Force:	48,000 lb	47,500 lb
Head Travel Rate Up	14 sec	10 sec
Head Travel Rate Down	10 sec	8 sec
In/Out Travel	20"	20"
Horizontal Traverse	68.5"	68.5"
Foot Vertical Stroke	52"	52"
Probe Angles	30° to 102°	30° to 100°
S-22 Hydraulic Hammer	550 ft-lb hydraulic hammer with an adjustable 1,800 bpm	
5,000 ft-lb Auger Drive Head with 2-speeds:	Hi-150 rpm, Low=55 rpm	Hi-150 rpm, Low=65 rpm

AMS Customer Service

We're Here to Help!

At AMS, our knowledgeable and friendly staff is here to assist you with detailed product information, special orders, delivery scheduling, and more. If you need assistance determining which tool to use, how to use it, or if you need equipment customized to fit your specific needs, contact our knowledgeable customer service and sales staff.

Making you successful is our job!



Ryan Anderson
Western US & Canada
PowerProbe Sales
800-635-7330 ext. 143
Cell: 208-406-9341
ryana@ams-samplers.com



Ken Lipscomb
Southeastern US & International
PowerProbe Sales
800-635-7330 ext. 160
Cell: 706-680-9015
kenl@ams-samplers.com



9700-VTR PowerProbe™



9700-D PowerProbe™



The world's finest sampling equipment.
phone: 1-800-635-7330 1-208-226-2017

More Information: www.ams-samplers.com/PowerProbes
fax: 1-208-226-7280 email: ams@ams-samplers.com